

## World Reference Base Workshop/Field excursion Ireland

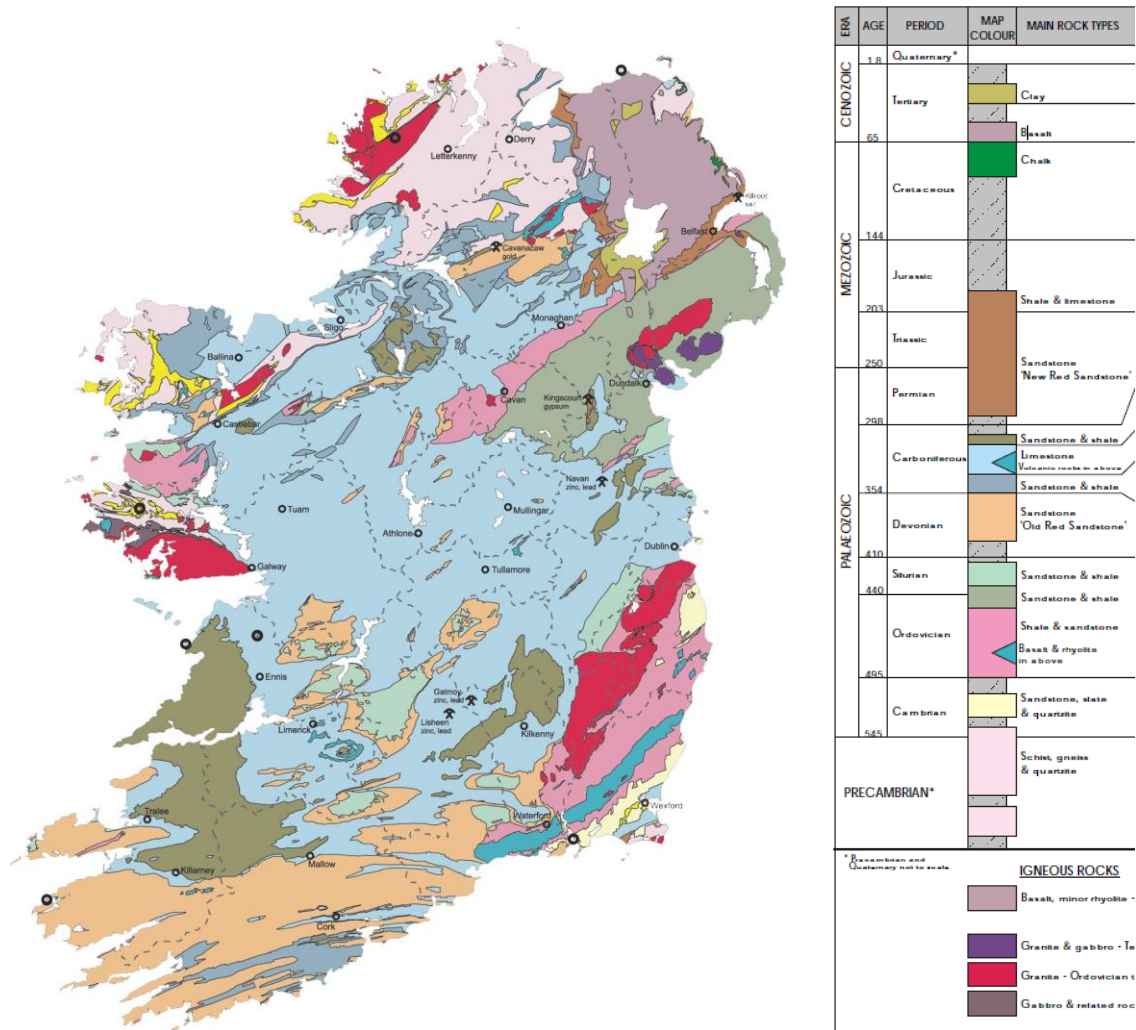
Monday 15<sup>th</sup> to Friday 19<sup>th</sup> of September 2014.



**Agriculture and Food Development Authority**



With the publication of the 3<sup>rd</sup> edition of the WRB imminent, the first official international excursion to classify with it, will take place in Ireland this autumn. This workshop will look at the fluvio-glacial influence on the soils in eastern and central Ireland, and move to the western fringes which are heavily influenced by the Atlantic. This will cover drier soils derived from mixture of drifts, such as marine mud, shale or volcanic origin in the south-east to wetter soils in the south-west derived from sandstone and shale. Along the way we will encounter soils derived from limestone, basalt & rhyolite and peats. We will also see an example of an anthric soil developed from seaweed and sea-sand.



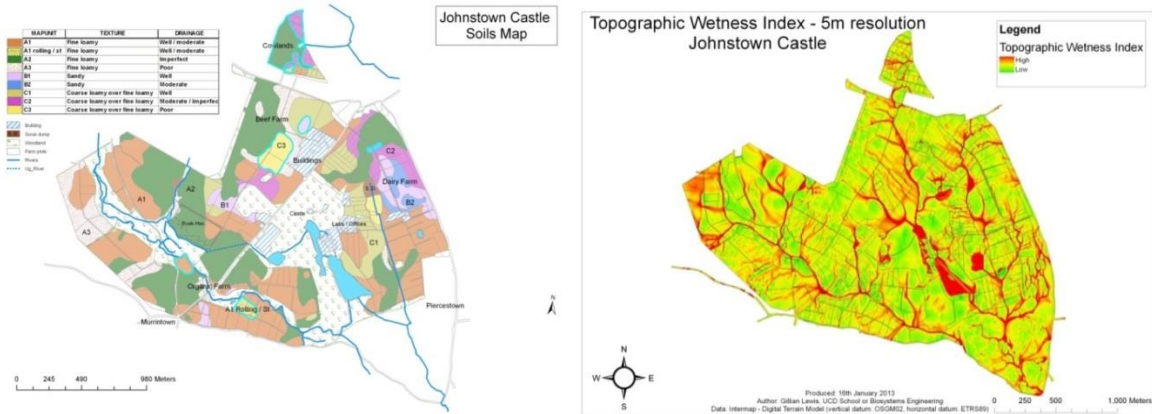
The soils will have a complete physical and chemical assessment prior to the excursion and all data will be available to aid the discussions on the day. Further details below.

15<sup>th</sup> September

Irish Soil Information System launch event at Johnstown Castle, Wexford (with lunch)

14.30 WRB course commences

Meeting in Johnstown Castle, Environmental Research Centre Wexford, Co. Wexford in the South East of the country. We will have the launch of the Irish soil information system (ISIS) and then visit two sites locally, derived from marine mud and shale drift (<http://www.teagasc.ie/environment/soil>)



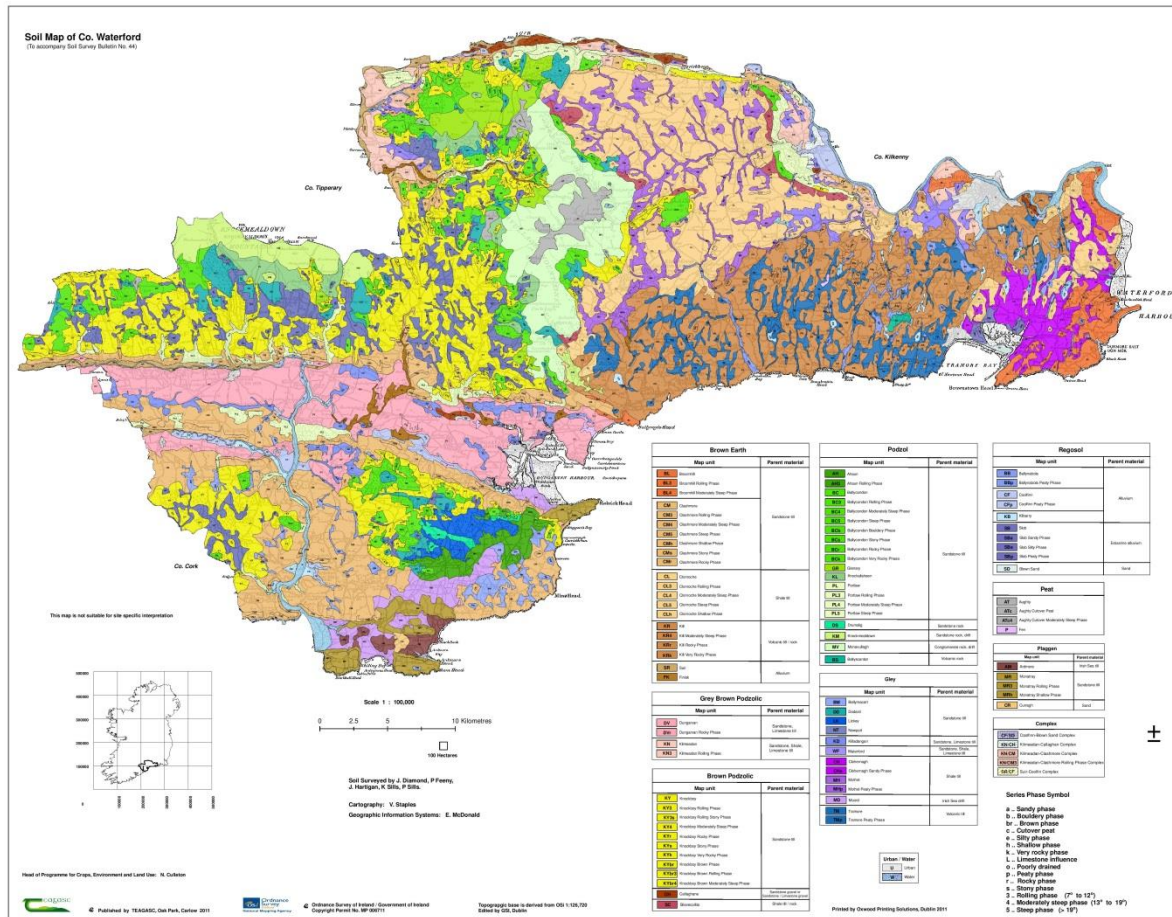
The first soil is a gleyic phaeozem, the second is a stagnic cambisol.



We will then stay in Wexford that night and travel to Waterford the following morning.

16<sup>th</sup> September

On the 16<sup>th</sup> we will visit the UNESCO Geopark <http://www.coppercoastgeopark.com/>, near the village of Bunmahon, starting with a guide from the geological service of Ireland. There are also two soils of interest here. There will be stagnic cambisol and a haplic luvisol, this time on igneous and metamorphic drift.



We will then travel to a hotel in Dungarvan, Co. Waterford and stay there for the night.

**17<sup>th</sup> September**

Leaving Dungarvan in the morning, we will then go to Mahon falls 30 minutes away to see an albic histic podzol and some sapric ombic histosol. Both are found above a sandstone conglomerate. The falls itself is a cascade on the Mahon River that empties from a mountain lake. There is a walk post parking of 35 minutes, time allowing.



## 17<sup>th</sup> September (Continued)

We will then travel to the head land of Ardmore to see a plaggen soil. This was a gleysol that was modified over the centuries with the addition of seaweed and sea-sand.

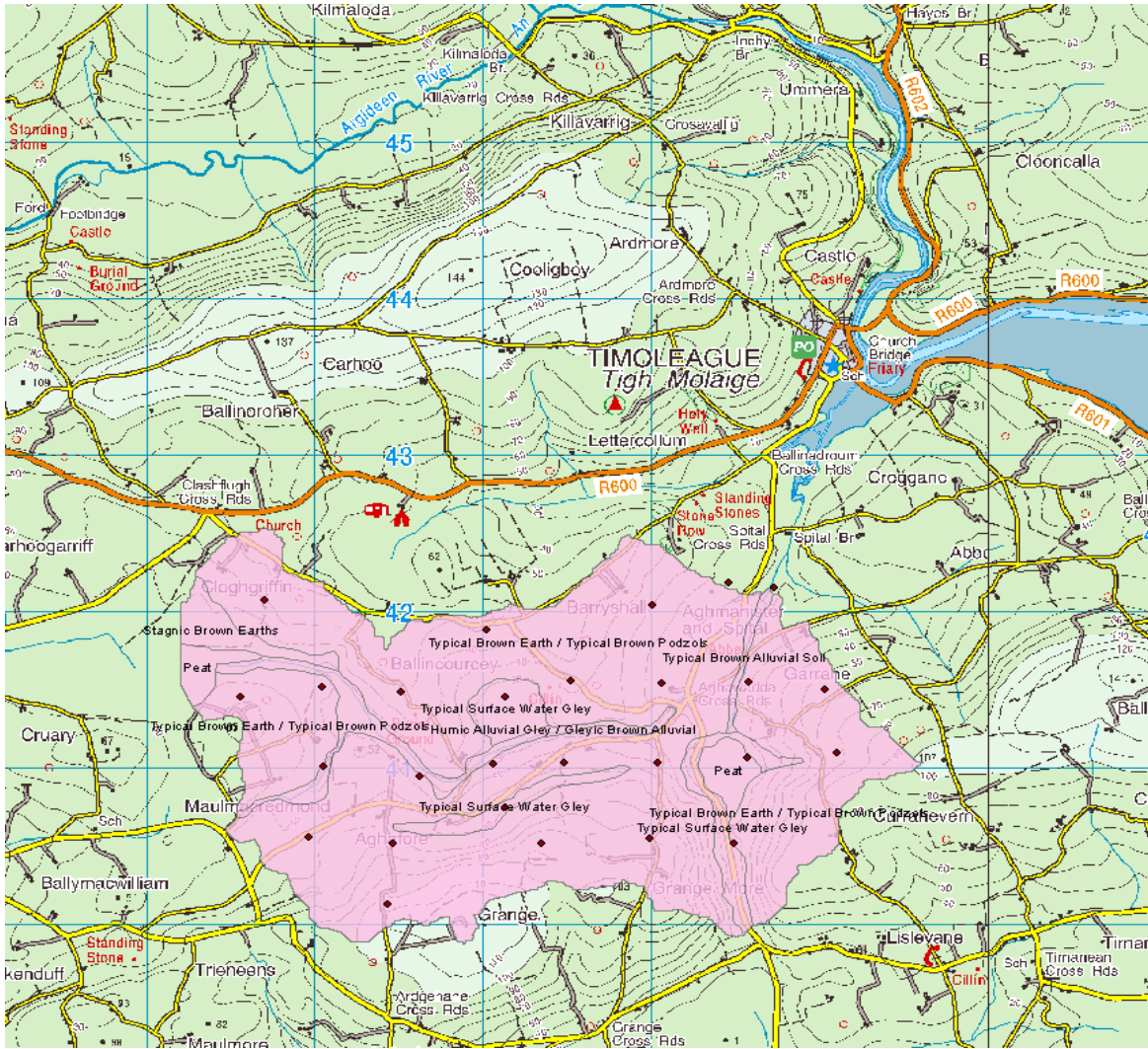


We will then move on to Co. Cork and begin to see the effects of greater rainfall on the soils and a change in geology to old red sandstone, carboniferous sandstone and shale and limestone. We will stay in a hotel in Clonakilty, in West Cork that night.

**18<sup>th</sup> September**

We now move to the west Cork village of Timoleague where there is a long-term river catchment study (on-going for 7 years) (<http://www.teagasc.ie/agcatchments/>). After hearing about the location and agricultural constraints from the local staff, we will see a haplic cambisol and a haplic stagnosol.





We then return to the town of Clonacilly. Nearby there is a cutanic luvisol with a centuries old shale mine nearby. We will then stay in the town of Clonacilly that night.



**19<sup>th</sup> September**

On our final day we will travel to the village of Schull where histic material has begun to develop on the gleysols. If time allows we may visit an atlantic blanket peat.



After this our excursion will draw to a close. Then it would be departure to the east or indeed an ideal starting point to see more of the west coast over the weekend before departing!

## Logistics - participants

The airport to fly into would definitely be Dublin, there are then buses direct from the airport to Wexford town – approx. 2hrs 45mins. Wexford Bus ( [www.wexfordbus.com](http://www.wexfordbus.com) ) and Bus Eireann ( [www.buseireann.ie](http://www.buseireann.ie) ) are the two companies that operate this service.

The drop off point in Wexford town is 15mins via taxi to Johnstown Castle or 20mins on a very limited schedule bus ( <http://wexfordbus.com/timetables/wexford-kilmore/> ) .

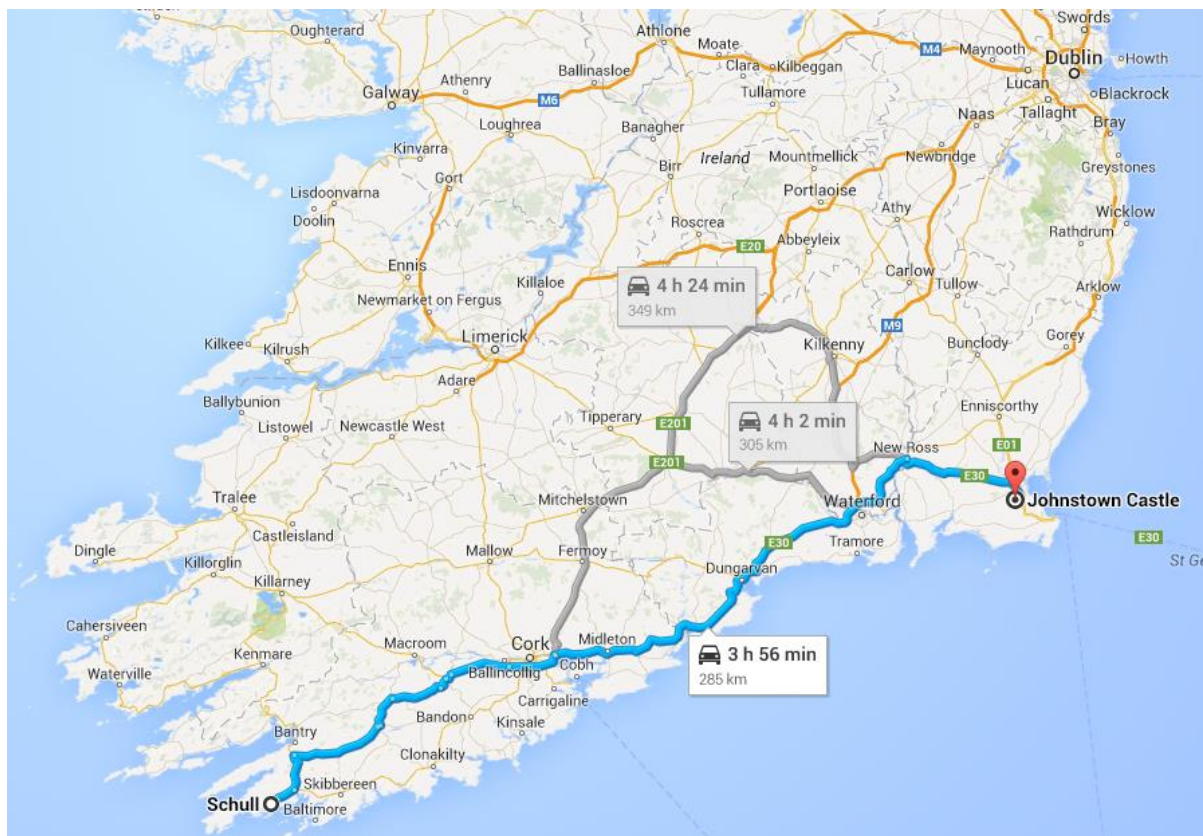
A coach from the excursion will then take participants from Johnstown Castle to all other sites for the week.

As the excursion finishes in west Cork, the coach will then travel back to Cork city centre (for bus and train transfers) and Cork airport.

<https://www.corkairport.com/gns/flight-information/destinations-airlines/scheduled-flights.aspx>

If a flight does not suit from Cork then the next best thing to do is to get the bus from Cork city centre to Dublin airport (3-4 hrs depending on time of day and company). There are three service providers: [www.buseireann.ie](http://www.buseireann.ie), [www.aircoach.ie](http://www.aircoach.ie), [www.gobe.ie](http://www.gobe.ie)

There is also the train to Dublin (2hrs 30mins, [www.ianrodeireann.ie](http://www.ianrodeireann.ie)) and then bus transfer (45mins [www.dublinbus.ie](http://www.dublinbus.ie) or [www.aircoach.ie](http://www.aircoach.ie) ) from the train station to Dublin Airport.



The cost has not been finalised and will be based on the final number of attendees, but looking at accommodation for that time of year it would be (as a guide) €250 for 4 nights bed and breakfast, single room. The cost for transportation, logistics and materials, based on 30 people would be €150.

The deadline for registration is the 30<sup>th</sup> of July. A website for registration will be launched on the 26<sup>th</sup> of May. Until then your principal contact point is Dr. Brian Reidy ([brian.reidy@teagasc.ie](mailto:brian.reidy@teagasc.ie)). Looking forward to seeing you all in the sunny south east (Please remember its Ireland, so bring appropriate rain gear, just in case!)

